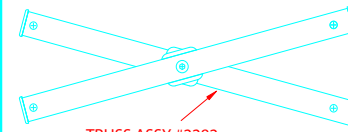


# Eclipse II (Steel) 8 x 8 Frame Replacement Parts

## NOTES:

1. ALL HARDWARE IS SHOWN BOLT TO NUT FROM OUTSIDE IN.
2. ARROWS SHOW INTERNAL ORIENTATION OF INNER TRUSS ASSY'S FROM BOLT TO NUT.
3. ALL HARDWARE IS VIEWED FROM TOP VIEW.

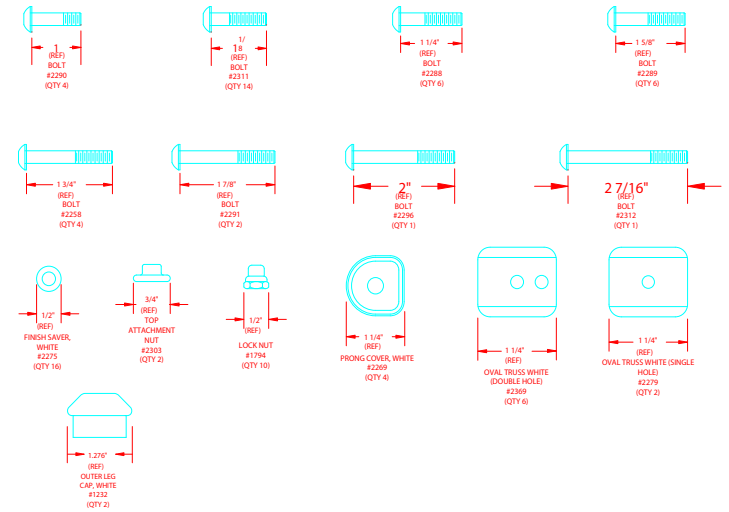
### OUTER TRUSS ASSY.



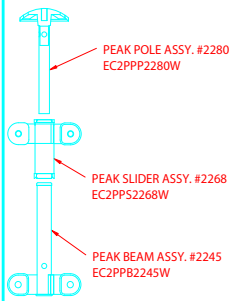
TRUSS ASSY #2282  
EC2PTR2282W

8X

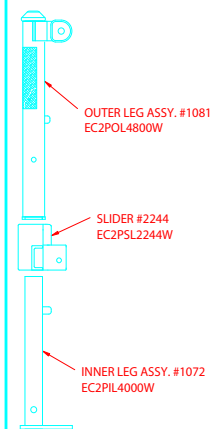
### NUT AND BOLT KIT #2558 EC2PNB2558



### PEAK ASSEMBLIES

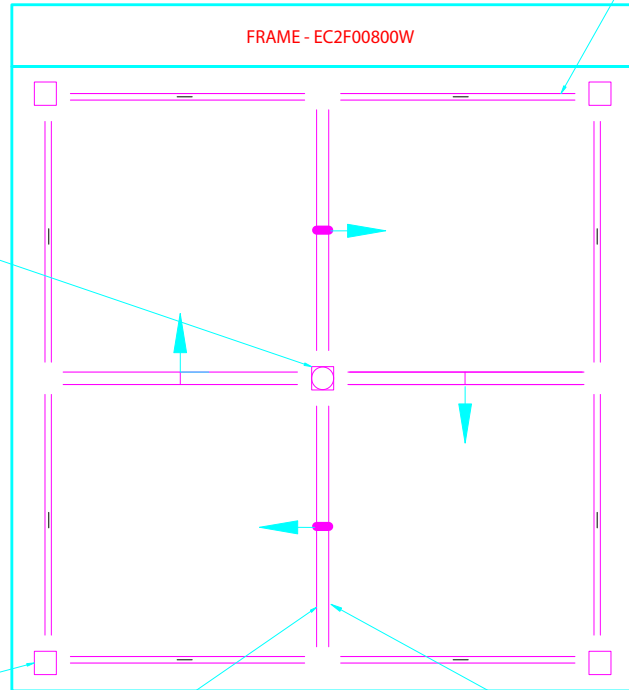


### LEG & SLIDER



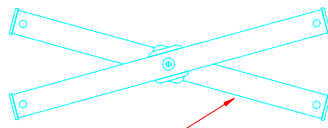
4X

### FRAME - EC2F00800W



TOP VIEW OF  
SHELTER LAYOUT  
SHOWN

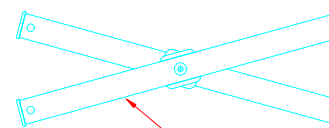
### INNER TRUSS ASSY.



TRUSS ASSY #2284  
EC2PTR2284W

4X

### INNER TRUSS ASSY.



TRUSS ASSY #2283  
EC2PTR2283W

4X

## Eclipse II (Steel) 8 x 8 Frame Replacement Parts

<u>Item</u>	<u>Desc.</u>	<u>Retail</u>
EC2F000800W	FRAME, ECLIPSE II 8', WHITE	275.00
EC2PIL4000W	INNER LEG, ECLIPSE II, 40"	17.00
EC2PNB2558	NUT & BOLT KIT, ECLIPSE II	6.50
EC2POL4800W	LEG OUTER, 48" ECLIPSE II, 8'	26.00
EC2PPB2245W	PEAK BEAM ASSY, ECLIPSE II 30"	17.00
EC2PPP2280W	PEAK POLE, ECLIPSE II ,26 5/8	18.50
EC2PPS2268W	PEAK SLIDER ECLIPSE II , 8'	9.50
EC2PSL2244W	SLIDER, OUTER LEG , ECLIPSE II	7.00
EC2PTR2282W	OUTER TRUSS, ECLIPSE II 48 1/4	9.75
EC2PTR2283W	PEAK TRUSS, ECLIPSE II 47 5/8"	9.75
EC2PTR2284W	PEAK TRUSS, ECLIPSE II 46"	9.75