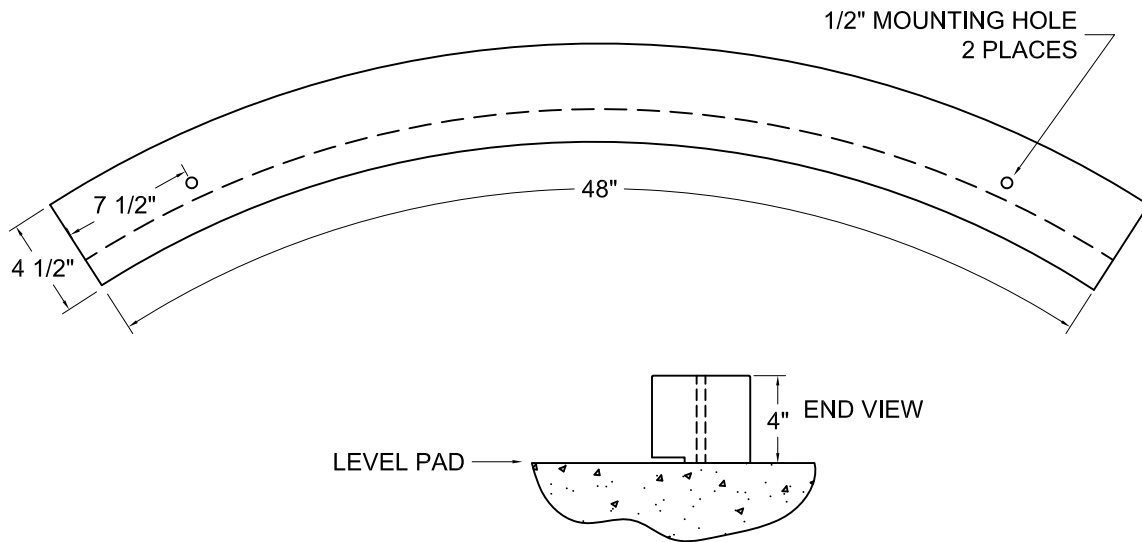




www.gillathletics.com  
800-637-3090

## 359 - SYNTHETIC TOEBOARD for LEVEL PAD SPECIFICATIONS

The 359 Synthetic Toeboard is designed to be used on a level throwing surface with the Gill 372 Aluminum shot circle or the Gill 373 Steel Shot Circle. Optionally, a painted white line may be used to designate the throwing circle. The toeboard is fabricated from low density polyethylene. The 359 toeboard meets all NFSA requirements for high school use.





www.gillathletics.com  
800-637-3090

## 359 - SYNTHETIC TOEBOARD, LEVEL PAD 372 INSTALLATION

### INSTRUCTIONS

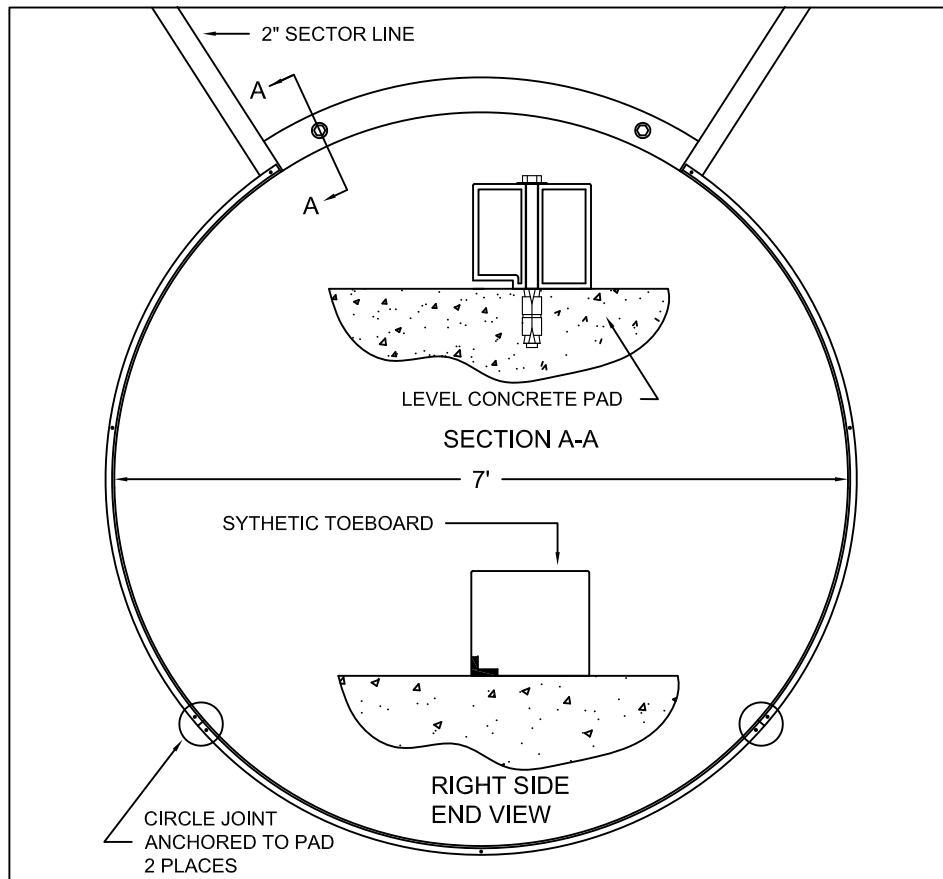
1. The 359 toeboard is mounted to a flat throwing surface (pad) with a Gill 372 Aluminum Shot Circle, (shown below) or a Gill 373 circle (See 359-3 for instructions) or a painted white line to designate the throwing circle.
2. Circumscribe a 7 foot diameter circle on the pad to designate the inside edge of the aluminum shot circle or 2" wide painted circle. The circle should be centered on the pad. If a painted circle is to be used, paint the circle prior to installing the toeboard.
3. Using the toeboard as a template, mark the center of the holes to be drilled for the 1/2" bolt anchors. Be sure the toeboard is properly positioned with the inside curved edge even with the inner edge of the scribed line or painted circle. The toeboard must also be centered on the sector lines.
4. Drill 7/8" holes for the expansion anchors (M2875), and LOOSLEY mount the toeboard in position with the

1/2" x 6 1/2" hex bolts (HDWE011040E0). Lay out the aluminum circle sections so the inside edge corresponds with the 7 foot circle on the pad and the opening in the circle is centered about the toeboard. Mark anchors for the circle will go. The circle will require nine 1/4" concrete wedge anchors.

5. Remove the circle sections and toeboard. Drill nine 1/4" - holes in the pad for the circle concrete anchors.

6. Install two 1/2" hex bolts through the toeboard and secure it in place. Use the 1/2" flat washers (HDWE050050E0) between the toeboard and the heads of the anchor bolts. Do not over tighten! Secure the circle sections to the pad with the 1/4" wedge anchors.

NOTE: Toeboard must be centered on sector lines, high school sector shown.



**NOTICE:** All installations should be done by experienced contractors and in accord with all applicable codes, laws and regulations. Suggested installation instructions herein are illustrative only and should be adapted to suit local requirements. Gill Athletics is not responsible for the manner in which these products are installed.



www.gillathletics.com  
800-637-3090

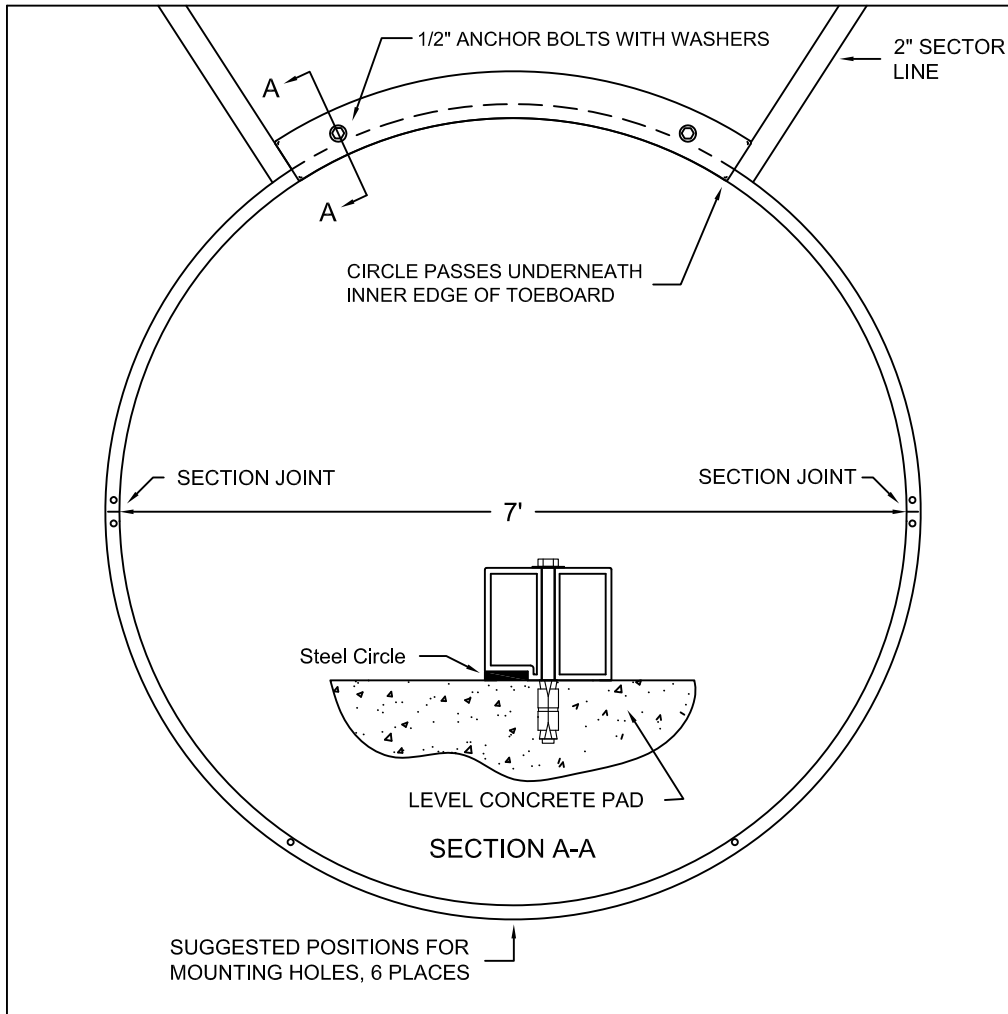
# 359 - SYNTHETIC TOEBOARD, LEVEL PAD 373 INSTALLATION

## INSTRUCTIONS

1. The 359 toeboard is mounted to a flat throwing surface (pad) with a Gill 373 Steel Shot Circle (shown below) or a Gill 372 circle (See 359-2 for instructions) or a painted white line to designate the throwing circle.
2. Scribe a 7 foot diameter circle on the pad to designate the inside edge of the steel shot circle or 2" wide painted circle. The circle should be centered on the pad with the two section joints to the right and left sides. If a painted circle is to be used, paint the circle prior to installing the toeboard. Note: The use of a painted circle will leave a 1/4" vertical gap between the inner edge of the toeboard and the pad surface.

3. Using the toeboard as a template, mark the center of the holes to be drilled for the 1/2" expansion anchors (M2875). Be sure the toeboard is properly positioned with the inside curved edge even with the inner edge of the steel circle or painted circle. The toeboard must also be centered on the sector lines.
4. Drill 7/8" holes for the anchors and mount the circle and toeboard. Mount the toeboard in position with the 1/2" x 6 1/2" hex bolts (HDWE011040E0). Use 1/2" flat washers (HDWE050050E0) between the toeboard and the bolt. Do not over tighten!

NOTE: Toeboard must be centered on sector lines, high school sector shown.



**NOTICE:** All installations should be done by experienced contractors and in accord with all applicable codes, laws and regulations. Suggested installation instructions herein are illustrative only and should be adapted to suit local requirements. Gill Athletics is not responsible for the manner in which these products are installed.

THIS WARNING IS GIVEN IN COMPLIANCE WITH CALIFORNIA'S PROPOSITION 65:

**WARNING**

This product contains chemicals known to the State of California to cause cancer, birth defects or other reproductive harm.

suggestions@gillathletics.com

Copyright ©2016 by Gill Athletics. All rights reserved.

GILL ATH  
03-01-16  
359-3