

**SPECIFICATIONS**

The 370 Discus Circle consists of 1" x 3/4" x 1/4" [25.4 mm x 19mm x 6.4mm], 6061-T6 aluminum angle roll bent to a 49 7/32" [125.0 cm] radius. Four arcs of chord length 62 5/8" [159 cm] form the circle. To assemble and secure the circle, 1/4" [6.4mm] dia. mounting holes are located at the center and ends of each arc.

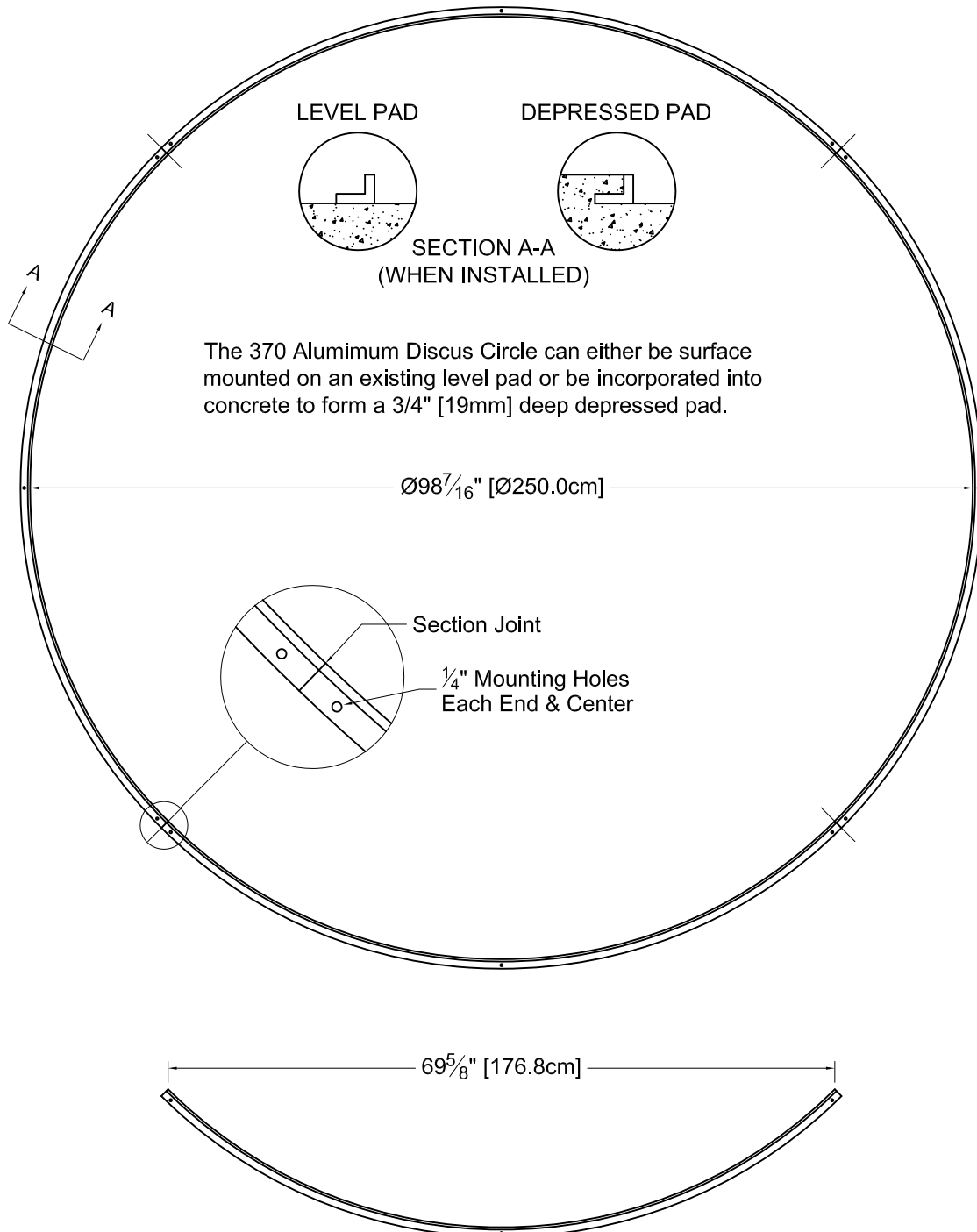




www.gillathletics.com  
800-637-3090

## 370 - ALUMINUM DISCUS CIRCLE SPECIFICATIONS

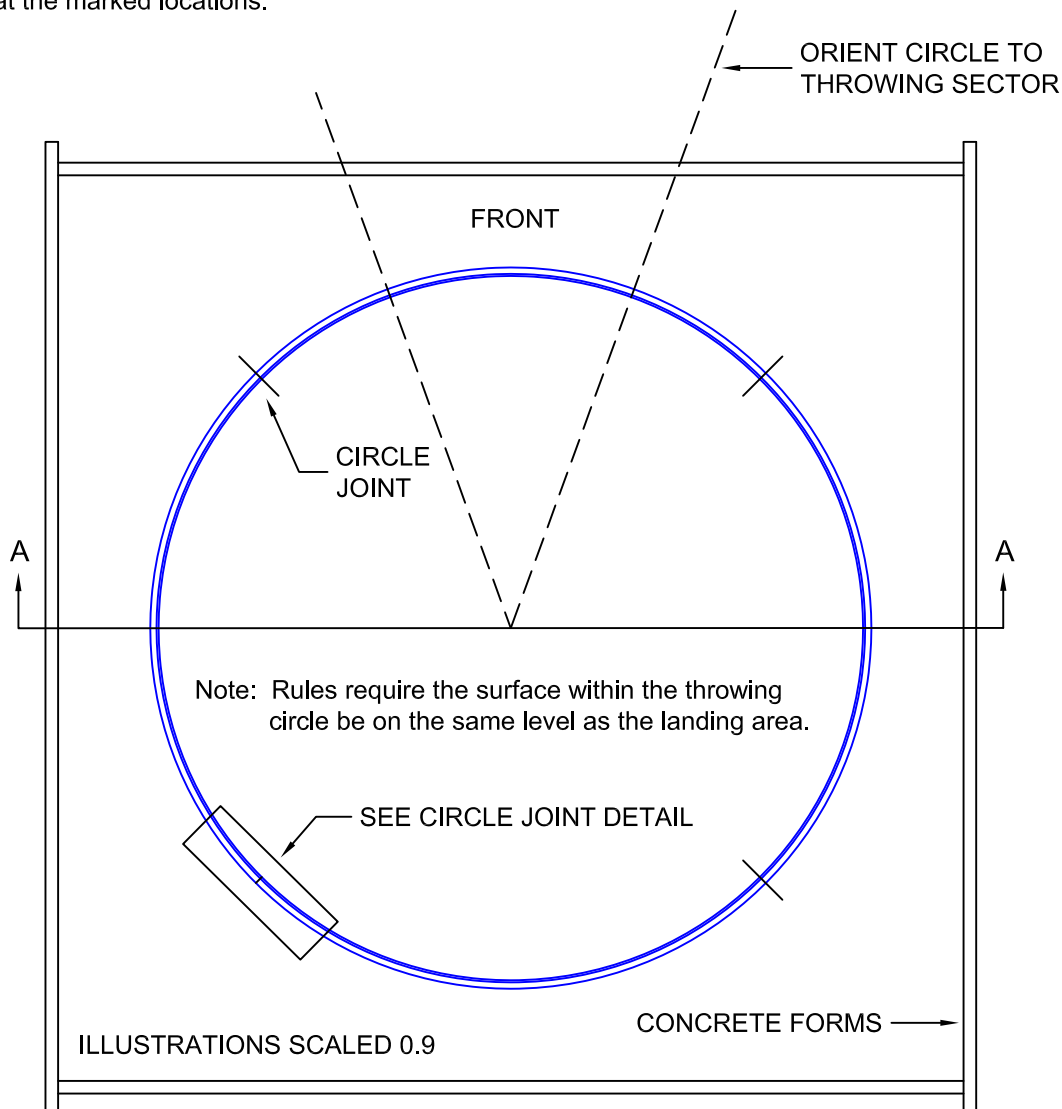
The 370 Discus Circle consists of 1" x 3/4" x 1/4", 6061-T6 aluminum angle roll bent to a 49 7/32" [125.0cm] radius. Four arcs of chord length 69 5/8" [176.8cm] form the circle. To assemble and secure the circle, 1/4" [6.4mm] dia. mounting holes are located at the center and ends of each arc. Dimensions in brackets are in centimeters.



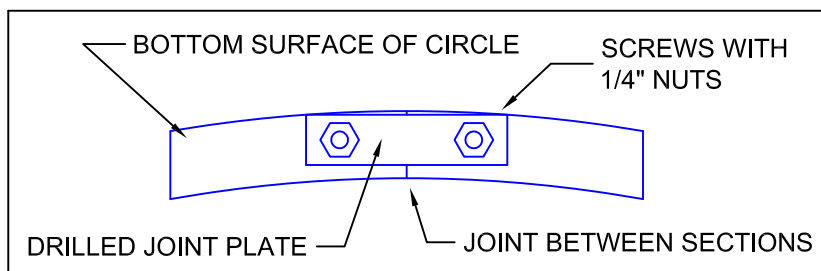
**CIRCLE ASSEMBLY INSTRUCTIONS**

1. Lay circle sections out on a flat surface to form an 8' 2 7/16" diameter circle, +/- 3/16 inch. If needed, section ends can be trimmed to achieve the correct diameter.
2. Place a 1" x 1/8" x 4" aluminum strip under each joint and carefully mark the hole positions. Note which strip goes with which joint. Drill 1/4" holes at the marked locations.

3. Using the drilled strips and 1/4" X 1 1/2" bolts and hex nuts, assemble the circle. Care must be taken in moving the assembled circle so as not to bend the strips. The circle sections can also be welded together.

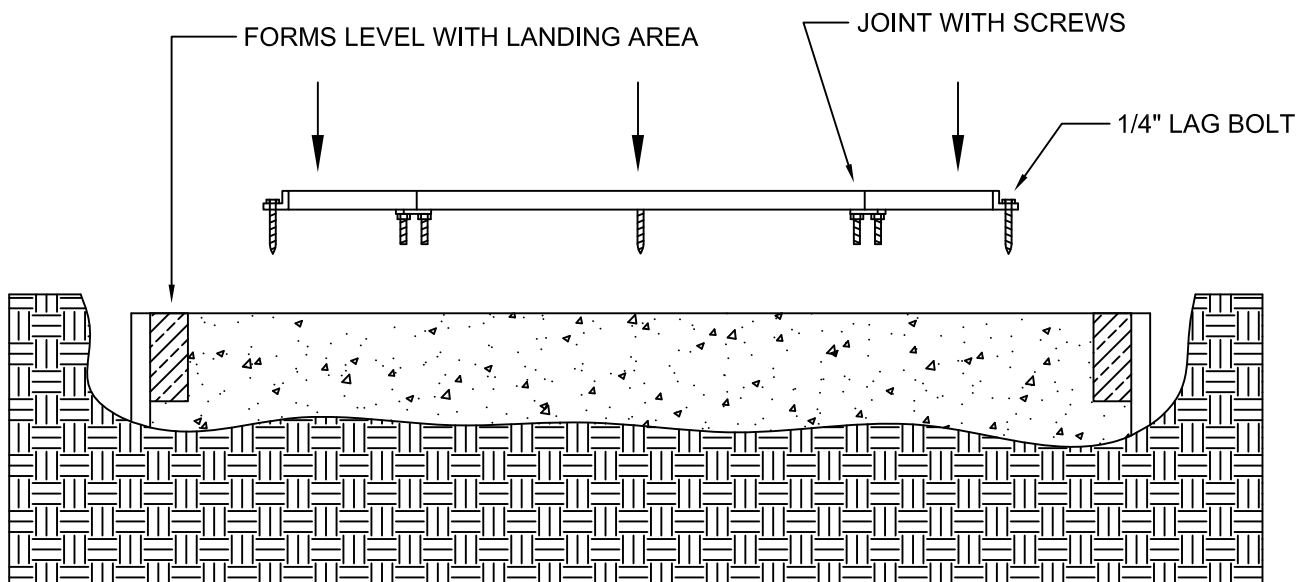


CIRCLE JOINT DETAIL - BOTTOM VIEW

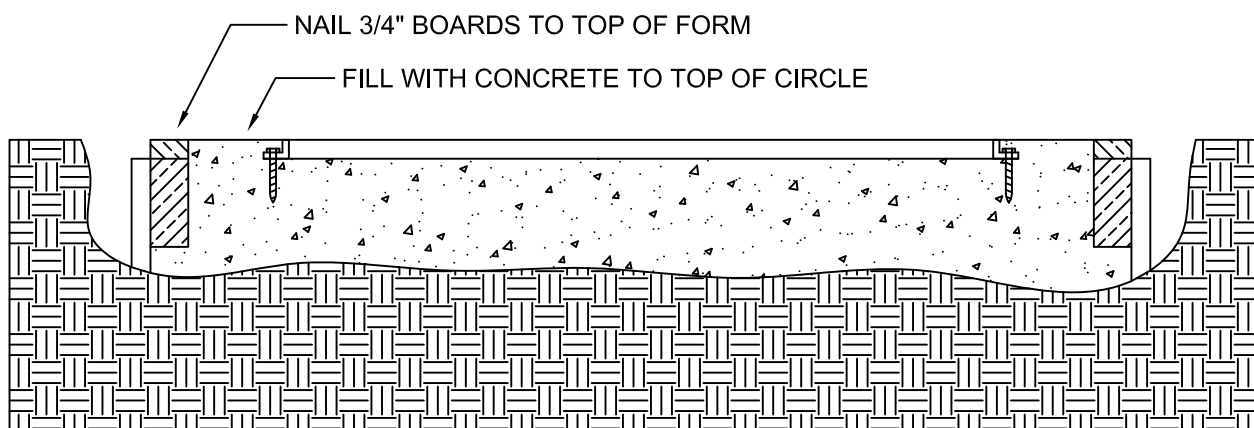


**INSTRUCTIONS FOR POURING PAD & SETTING CIRCLE**

1. Position forms as shown and install a drain pipe if desired. Position the drain to the side of the circle so as not to interfere with the athlete's throw.
2. Pour and finish concrete level with forms and center the assembled circle on the concrete surface as shown in Section A-A #1. Joints should be positioned as shown.
3. Check that circle has remained circular and has not sunk into the concrete at any point.
4. Nail additional 3/4" fir strips along the top of the forms to raise the form level to ground level, as shown in Section A-A #2.
5. Roughen the surface of the first pour outside the circle. Pour additional concrete outside the circle. Finish the concrete level with the top edge of the circle and the fir strips.
6. After concrete has set, remove forms.



SECTION A-A #1



SECTION A-A #2

**NOTICE:** All installations should be done by experienced contractors and in accord with all applicable codes, laws and regulations. Suggested installation instructions herein are illustrative only and should be adapted to suit local requirements. Gill Track & Field is not responsible for the manner in which these products are installed.

THIS WARNING IS GIVEN IN COMPLIANCE WITH CALIFORNIA'S PROPOSITION 65:

**WARNING**

This product contains chemicals known to the State of California to cause cancer, birth defects or other reproductive harm.

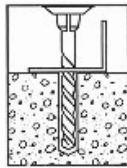
[suggestions@gillathletics.com](mailto:suggestions@gillathletics.com)

Copyright ©2005 by Gill Athletics. All rights reserved.



## *Trubolt Wedge Anchor*

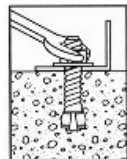
### INSTALLATION INSTRUCTIONS



**1.** Using a bit whose diameter equals the anchor diameter, drill hole to any depth exceeding the minimum embedment. Clean hole.



**2.** Assemble anchor with nut and washer so that the top of the nut is flush with the top of the anchor. Drive anchor through material to be fastened so that nut and washer are flush with surface material.



**3.** Expand anchor by tightening nut 3 to 5 turns, or to the specific torque requirement (see selection chart).