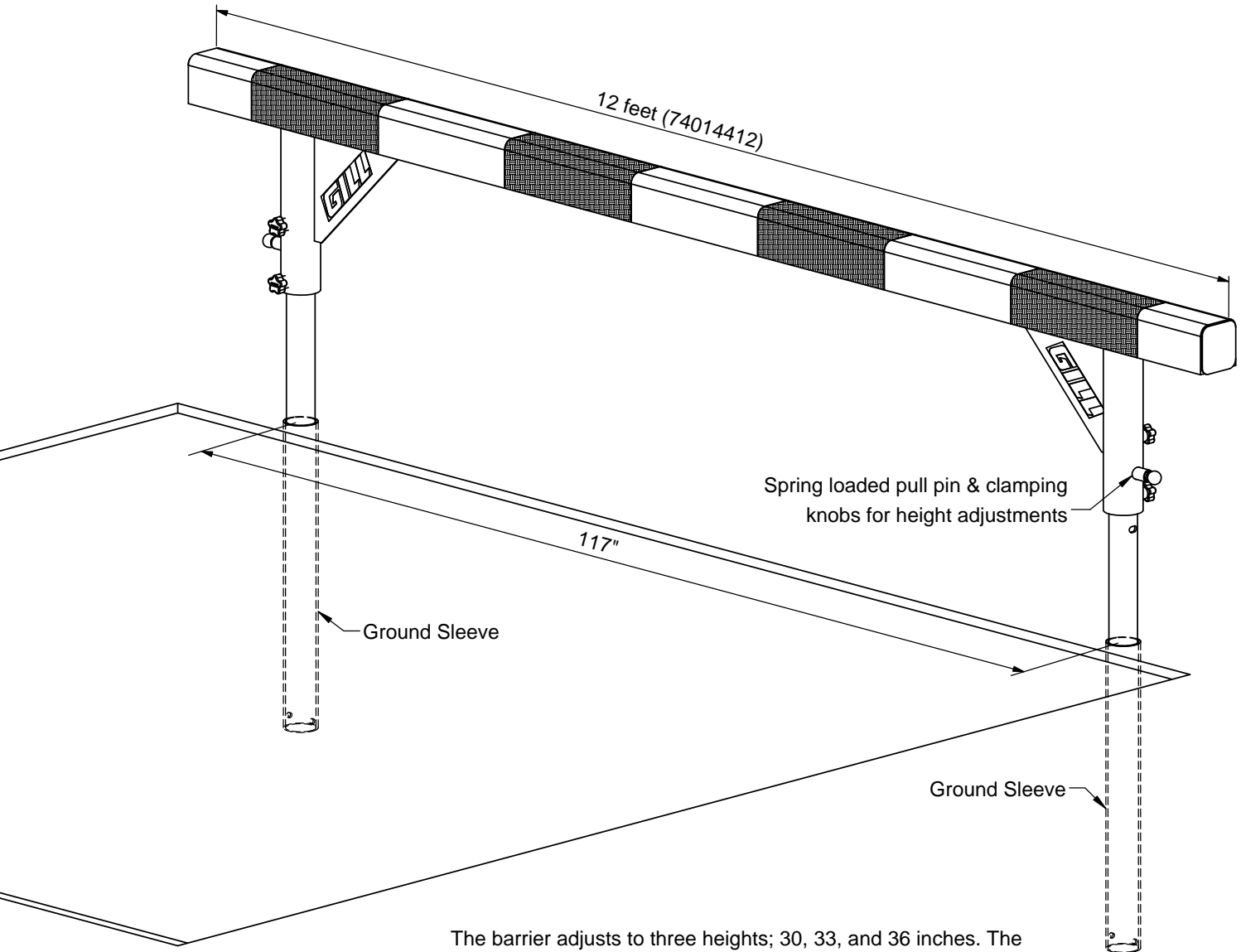




www.gillathletics.com
800-637-3090

740134 - WATER JUMP BARRIER - GROUND SLEEVED INSTRUCTIONS

The 740134 Water Jump Barrier is designed to be using ground sleeves set into the wall of a water jump pit. The beam is 12 feet wide



The barrier adjusts to three heights; 30, 33, and 36 inches. The beam is locked in position with a stainless steel spring loaded pull pin and clamping knobs.

The beam is constructed of 4 inch square 11 gauge steel tube, covered on three sides with 1/2 inch thick Vultrak track surface.

The leg assemblies are fabricated from 2-1/2" and 3-1/2" Sch 40 steel pipe with spring assist. The legs are painted with powder coat for a durable finish.

The leg assemblies are installed into PVC ground sleeves 32 inches deep.

NCAA compliant and IAAF certified.



www.gillathletics.com
800-637-3090

740134 - WATER JUMP BARRIER - GROUND SLEEVED INSTRUCTIONS

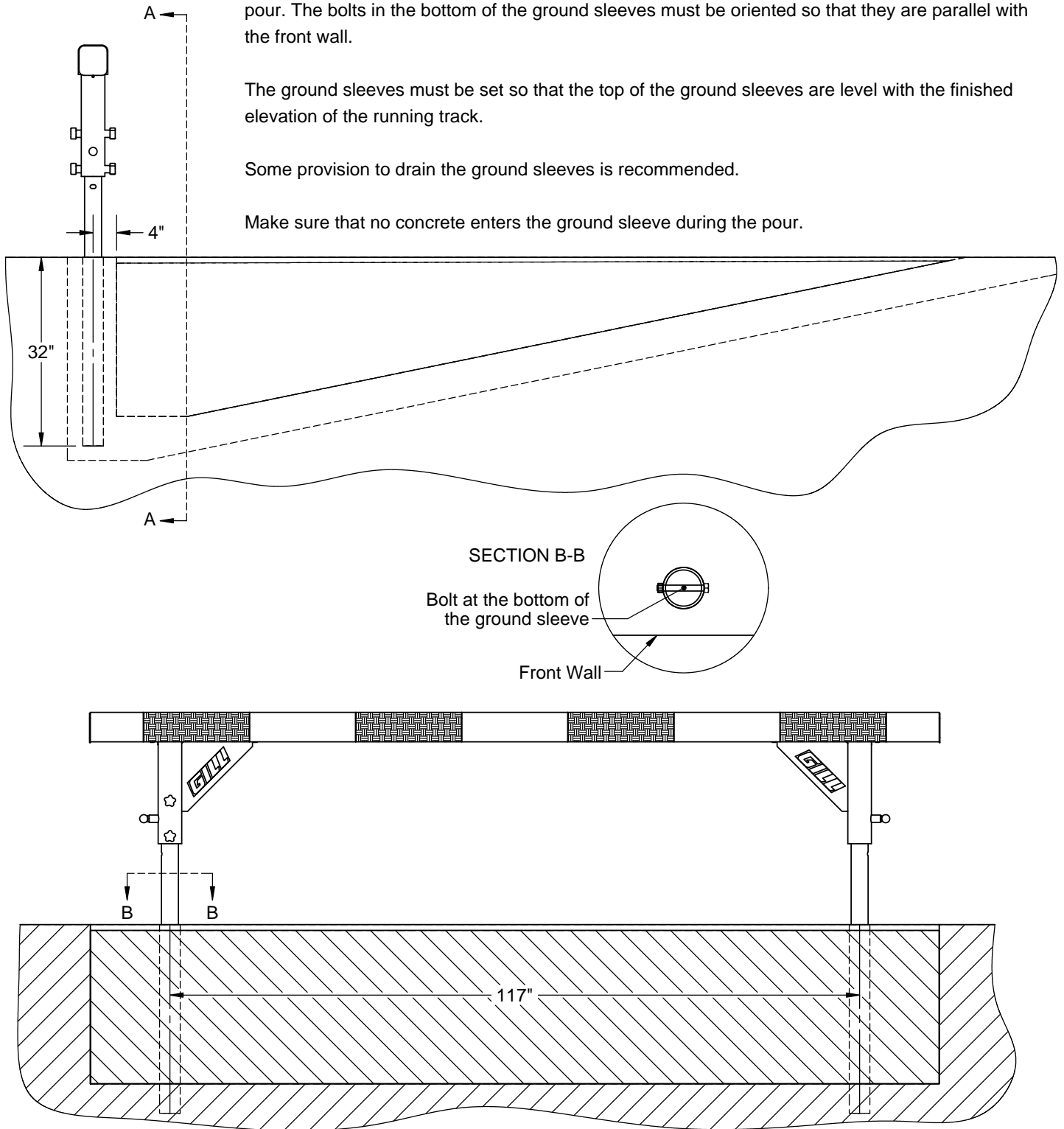
The ground sleeves must be installed at the same time as the front wall of the water jump pit. The ground sleeves will be cast into the concrete of the front wall of the water jump pit.

It is critical that the ground sleeves be located correctly and held plumb during the entire concrete pour. The bolts in the bottom of the ground sleeves must be oriented so that they are parallel with the front wall.

The ground sleeves must be set so that the top of the ground sleeves are level with the finished elevation of the running track.

Some provision to drain the ground sleeves is recommended.

Make sure that no concrete enters the ground sleeve during the pour.

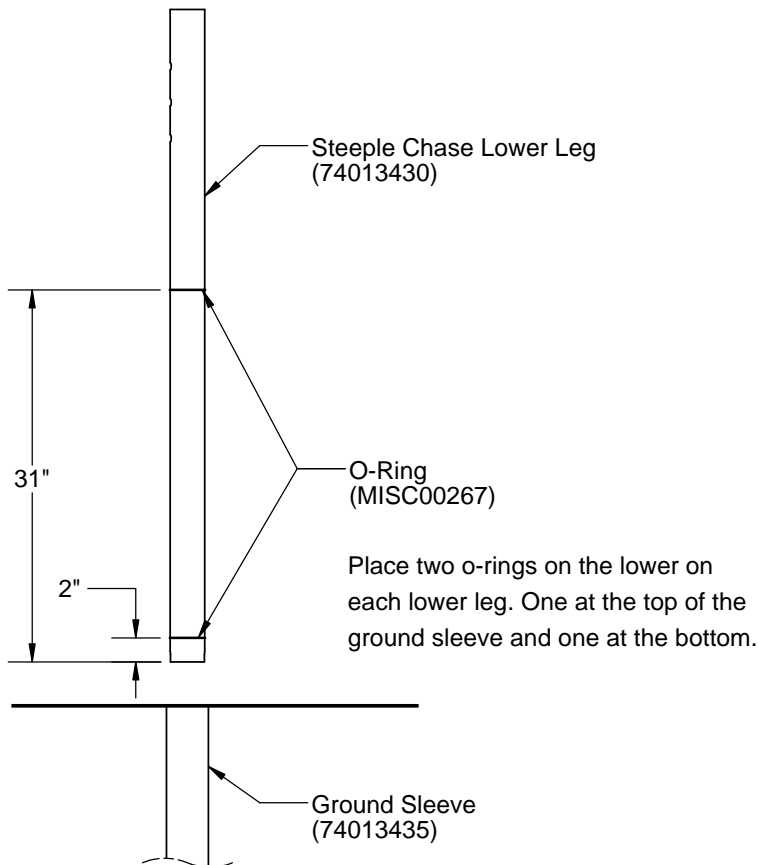
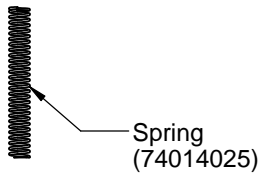
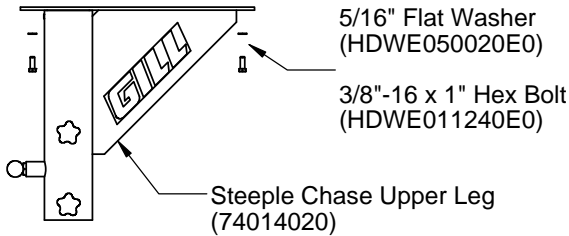
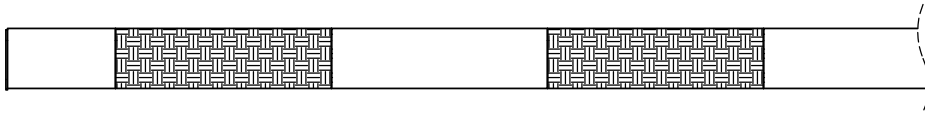


SECTION A-A



www.gillathletics.com
800-637-3090

740134 - WATER JUMP BARRIER - GROUND SLEEVED INSTRUCTIONS



Bolt the upper legs to the bottom of the beam in four places per leg.

Slide the lower legs into the ground sleeves.

Slide the spring into the top of the lower leg.

Make sure the clamping knobs are backed out.

With at least two people, lift the beam and slide the upper legs onto the lower legs.

Pull the pin out to adjust to the designed height. Tighten the clamping knobs to secure the beam.

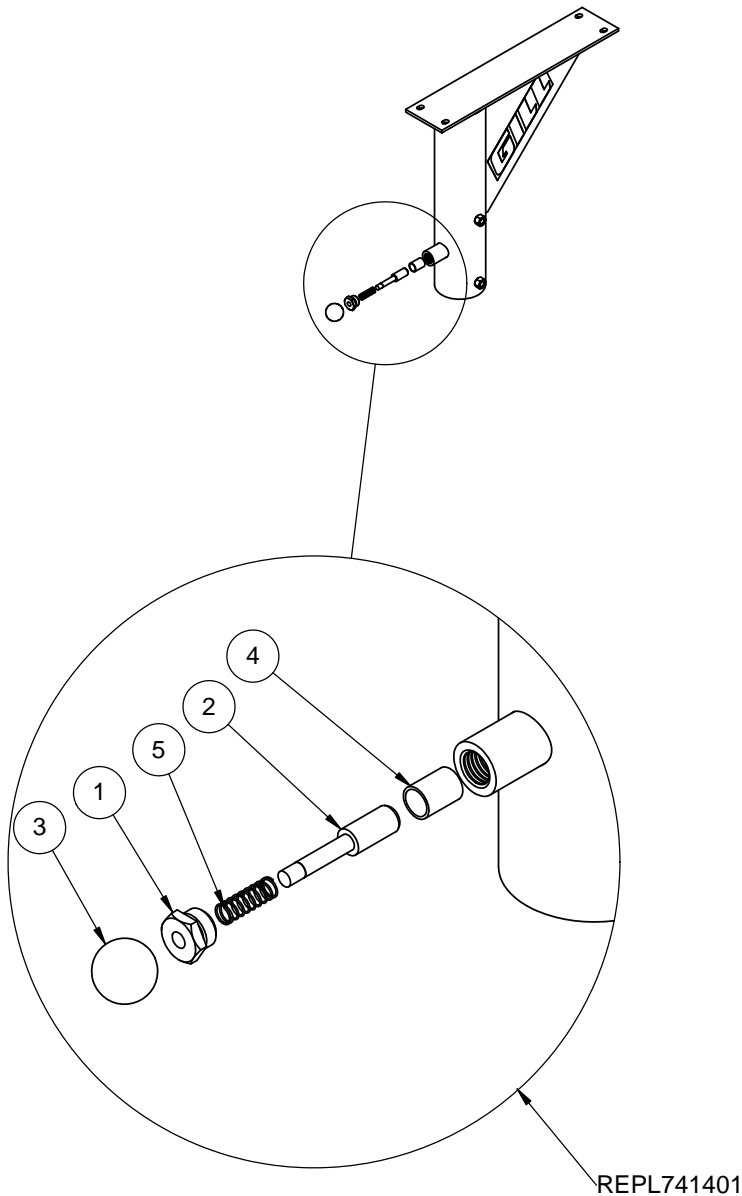
THIS WARNING IS GIVEN IN COMPLIANCE WITH CALIFORNIA'S PROPOSITION 65:
WARNING
This product contains chemicals known to the State of California to cause cancer, birth defects or other reproductive harm.



www.gillathletics.com
800-637-3090

740134 - WATER JUMP BARRIER - GROUND SLEEVED INSTRUCTIONS

ITEM NO.	PART NUMBER	Description
1	7401402003	Pull Pin Collar Cap
2	7401402004	Pull Pin Stud
3	HAND00088	Ball Knob
4	BUSH00088	Shaft Bushing
5	SPNG00041	Spring



1. Press the bushing (BUSH00088) into the pull pin collar so that it is flush with the inside wall of the pipe.
2. Slide the spring (SPNG00041) onto the shaft of the pull pin stud (7401402004). Then slide the pull pin collar cap (7401402003) onto the pull pin stud. Next screw the knob (HAND00088) onto the pull pin stud and Loc-Tite the threads.
3. Screw the pull pin collar cap into the pin collar. Make sure to Loc-Tite the threads.