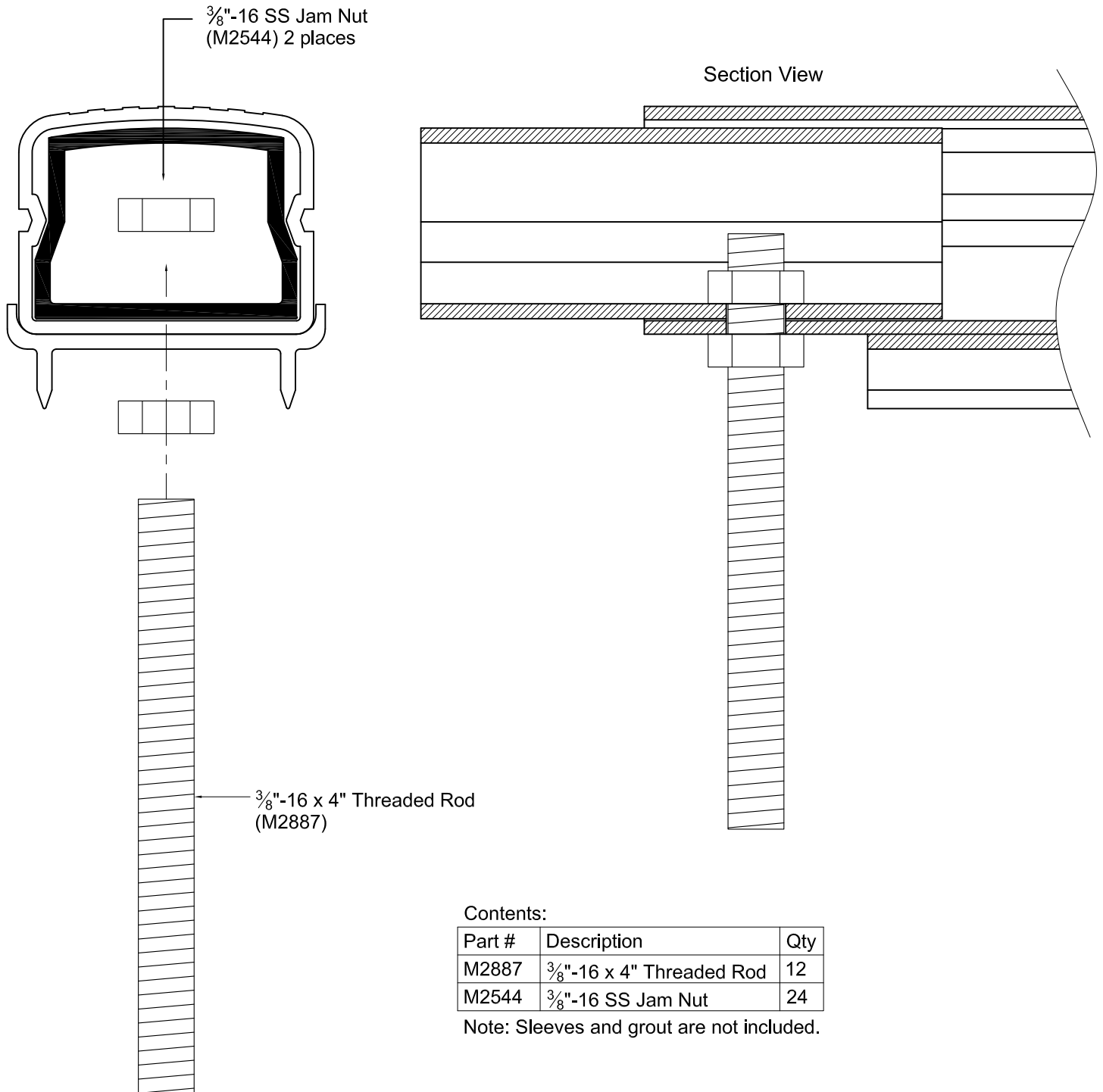




www.gillathletics.com  
800-637-3090

## 851P - TRACK CURBING BASE PINS ANCHOR PIN INSTALLATION

1. Determine which joints require anchor pins.
2. Drill  $\text{Ø}\frac{3}{8}$ " hole in bottom of curb as shown below and install pin with  $\frac{3}{8}$ "-16 jam nuts provided.

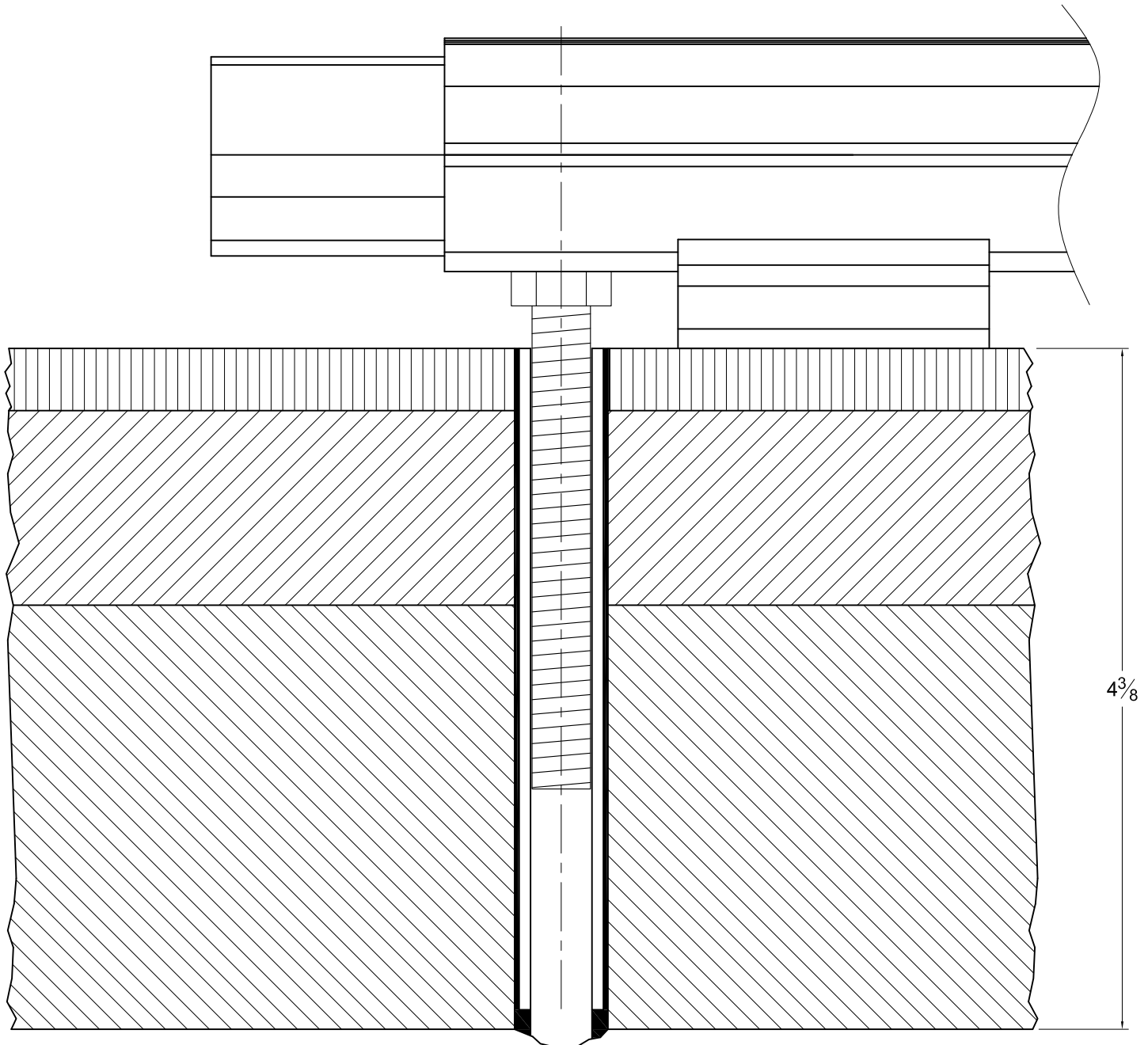




www.gillathletics.com  
800-637-3090

## 851P - TRACK CURBING BASE PINS ANCHOR PIN INSTALLATION

### PIN SLEEVE INSTALLATION



#### PIN SLEEVES

1. Completely lay out and assemble curbing per instructions and install pins where required.
2. Mark the points on the track where pins will rest.
3. At each of these marks, drill a vertical hole to fit the sleeves completely through the track surface. The holes must be at least 4 3/8" deep.
4. Grout a sleeve (not included) in each hole flush with the track surface.
5. The bottom of the sleeve must remain open to the track aggregate base for drainage.

THIS WARNING IS GIVEN IN COMPLIANCE  
WITH CALIFORNIA'S PROPOSITION 65:

**WARNING**

This product contains chemicals known to the  
State of California to cause cancer, birth defects  
or other reproductive harm.

[suggestions@gillathletics.com](mailto:suggestions@gillathletics.com)

Copyright ©2014 by Gill Athletics. All rights reserved.

GILL ATH  
09-28-14  
851P\_inst2